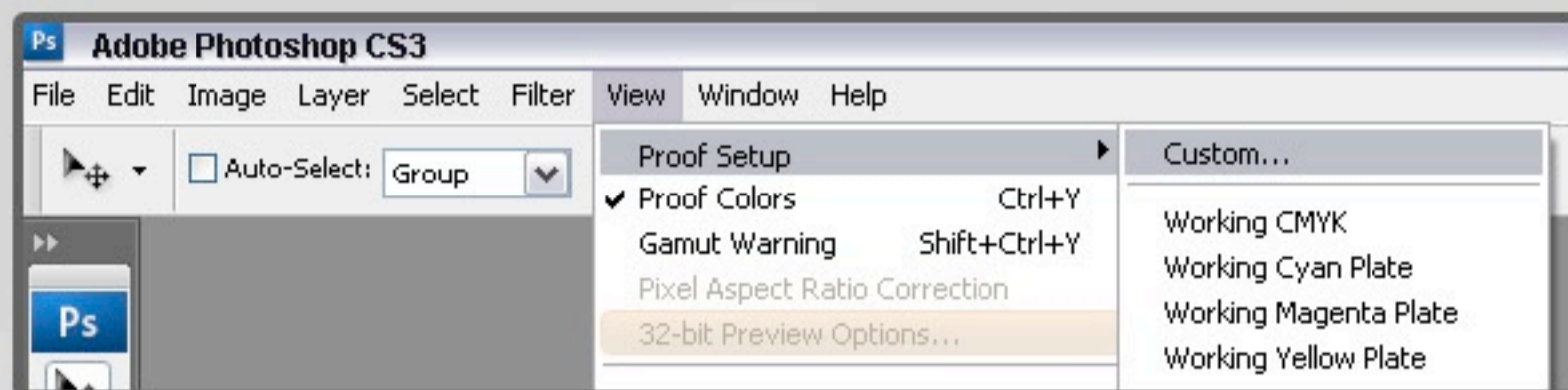
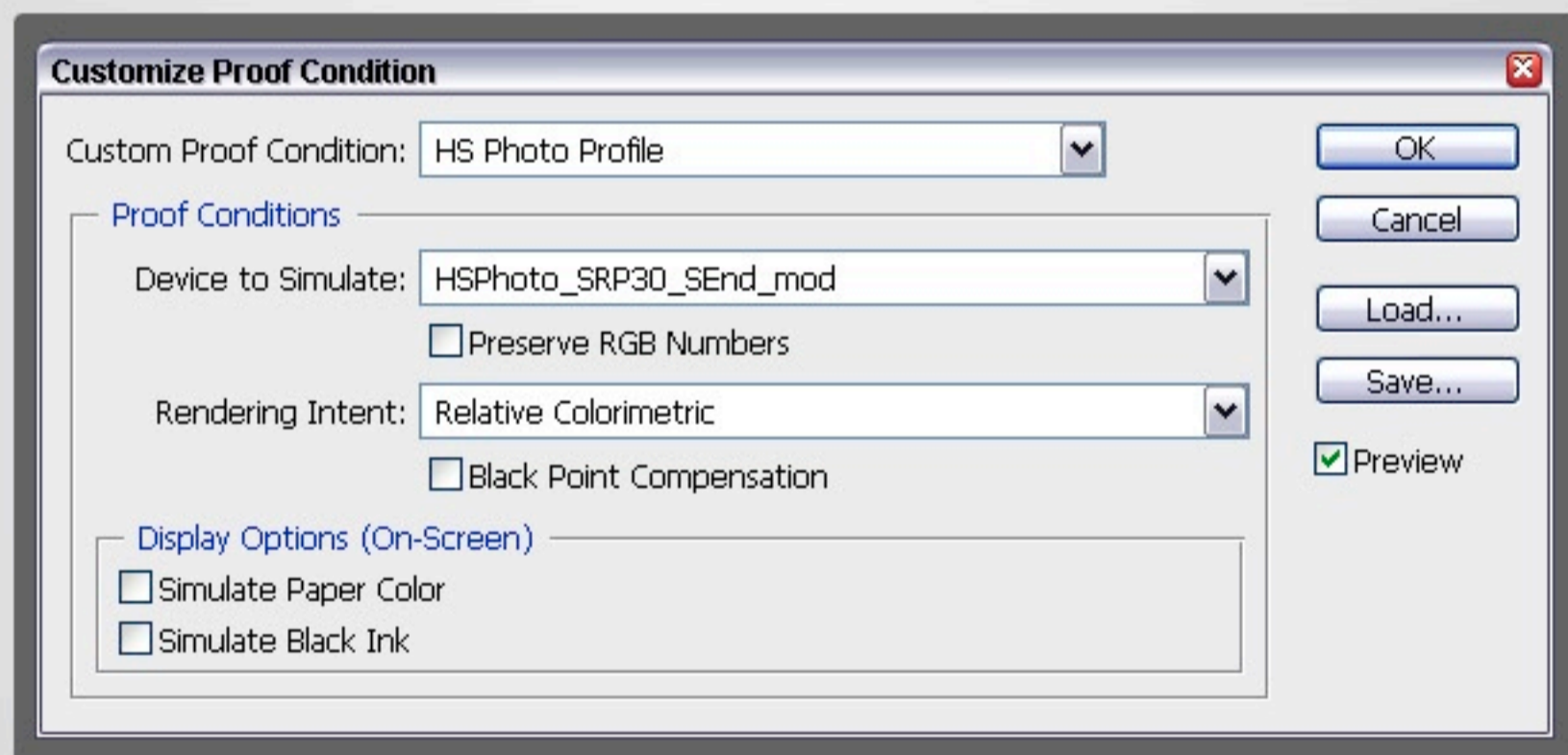


HS Photo Custom Proof Setup for PhotoShop

1. Go to the "View" menu and select "Custom" from the "Proof Setup" Drop down.



2. Choose the "HSPhoto_SRP30_SEnd_mod" profile from the "Device to Simulate" drop down menu. You should have already downloaded this printer profile from our website, and placed it into the correct location. View the screen capture below and set all options as shown here. Then click "Save" and give your new custom proof setup a name...ie "HS Photo Profile"



3. With your image open, go to the "View" menu, and select the "Proof Colors" option...OR...use Ctrl+Y on your keyboard to view the profile. Keep in mind, you are not changing the embedded profile here, you are only viewing the effect that our printing will have on your image when no additional corrections are applied by the lab.

