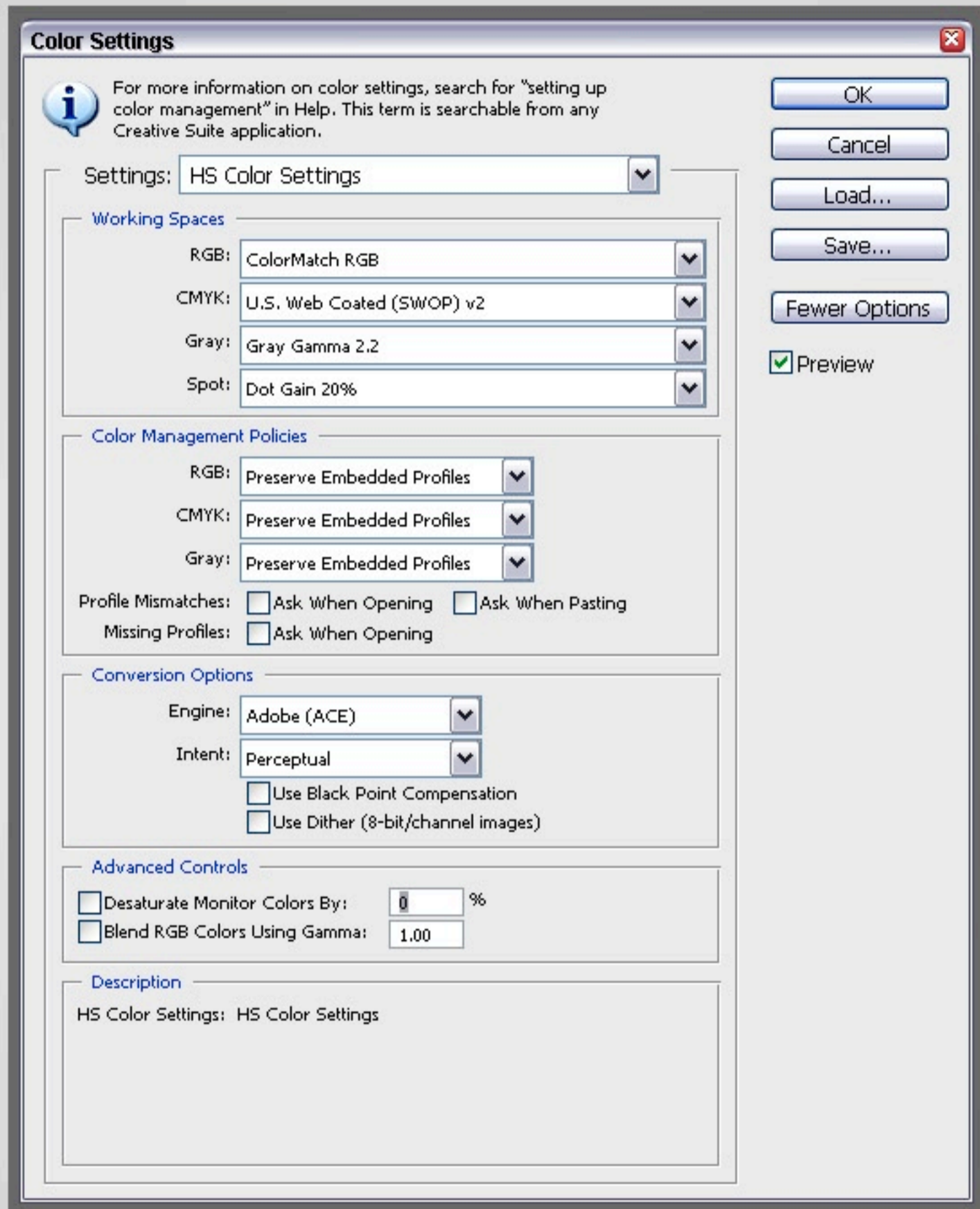


HS Photo Color Settings for PhotoShop

1. Go to the "Edit" menu and select the "Color Settings" option. View the screen capture below and set all options as shown here. Then click "Save" and give your new color settings a name...ie "HS Photo Color Settings"



Note: These settings have been chosen based on the way our printers handle color. When using these settings, along with our printer profile in the proof setup, and having a calibrated monitor, you will be able to see as close as possible what your image would look like when printed without any adjustments made by the lab. When working on images not being sent for print at HS Photo, you would change the color setting of your choice, or the default.